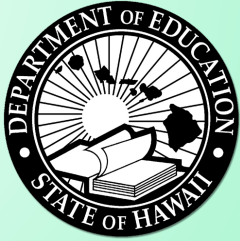


Aloha+

Curricular Database



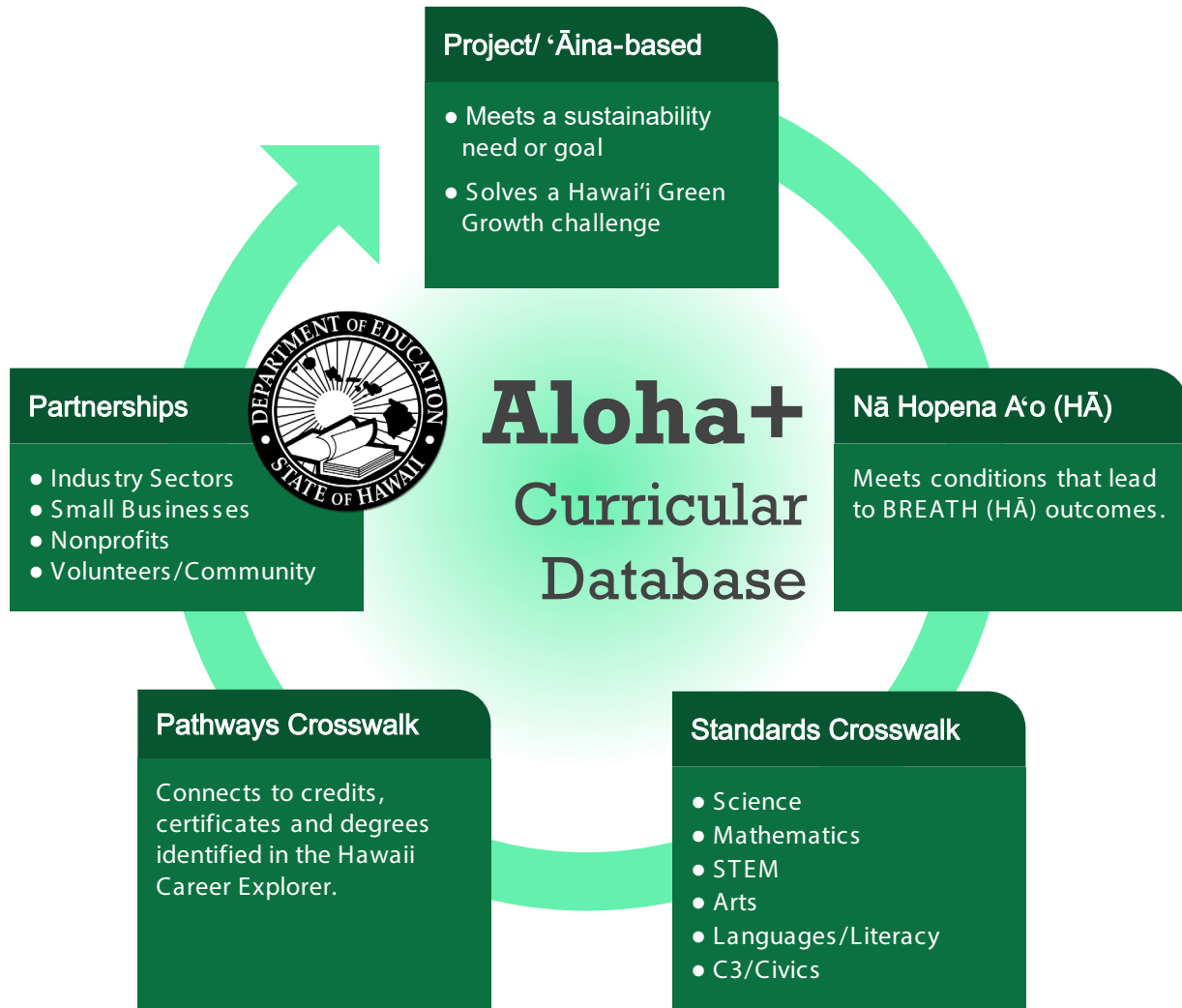
Projects +

HĀ Policy +

Standards +

Career Pathways +

Partnerships +



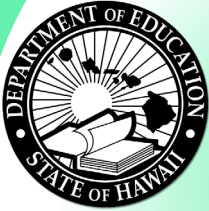
Schools lead

as innovation labs for project-based learning on sustainability and community resilience.



Specialists support

by crosswalking the work to standards and career pathways, and building partnerships.



Project/ 'Āina-based

- Meets a sustainability need or goal
- Solves a Hawai'i Green Growth challenge

Aloha+

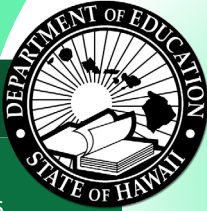
Curricular Database

Nā Hopena A'o (HĀ)

Meets conditions that lead to BREATH (HĀ) outcomes.

Schools lead

as innovation labs for project-based learning on sustainability and community resilience.



Aloha+

Curricular Database

Partnerships

- Industry Sectors
- Small Businesses
- Nonprofits
- Volunteers/Community

Pathways Crosswalk

Connects to credits, certificates and degrees identified in the Hawaii Career Explorer.

Standards Crosswalk

- Science
- Mathematics
- STEM
- Arts
- Languages/Literacy
- C3/Civics

Specialists support

by crosswalking the work to standards and career pathways, and building partnerships.



Aloha+ Curricular Database sources

- UH-Mānoa College of Education's Ethnomathematics and STEM Institute: <https://ethnomath.coe.hawaii.edu/resources.php>
- Mālama Honua: [bit.ly/HIDOE-MH](http://www.hokulea.com/resources/curriculum) & <http://www.hokulea.com/resources/curriculum>
- World Conservation Congress-aligned curriculum: [bit.ly/HIDOE-IUCN](http://www.hokulea.com/resources/curriculum)
- UH-Mānoa Institute for Sustainability & Resilience: <https://manoa.hawaii.edu/isr/curriculum>
- Kokua Hawai'i Foundation: <https://www.kokuahawaiifoundation.org/programs>
- Ala Wai Challenge winners: <https://www.alawaichallenge.org>
- Nā Wai Ekolu: <https://www.nawaiekolu.org>

HIDOE participating schools: Halau Ku Mana, Haleiwa EI, Hauula EI, Hokulani Elementary, Jarrett Middle, Jefferson EI, Kaahumanu EI, Kaimuki High, Manoa Elementary, Mililani High, Noelani EI, Palolo EI, Pauoa EI, Radford High, SEEQS, Myron B Thompson Academy, University Lab School, Voyager PCS, Waikiki EI

- HIDOE Learning Design: <https://learningdesign.hawaiipublicschools.org>
- Kaua'i Aloha+ Challenge: <https://kauaichallenge.org>



Aloha+ Curricular Database functionality

- Login/process for certified educators to help process the crosswalk to standards.
- Login/process for Career Pathways architects (Hawaii P-20, UH Community Colleges) to build/certify relevant credit pathways to credentials, certificates, Hawaii high school diploma, post-secondary.
- Registration for schools to log their *ma ka hana 'ike* projects in the community to match with volunteers, small businesses, and nonprofits. Users of the system could get a notification when an aligned opportunity arises.
- Messaging board for educators/community to pose questions, seek resources not in the database.
- Student involvement: Registration for official school clubs or community clubs with students to register an Aloha+ Challenge project.
- Donation exchange: Schools can post their material needs for a project that businesses can fulfill.
- App? "Tinder for Sustainability Projects"