



Crowdsourcing with Gamification

Dr. Adam Jansen
State Archivist
Hawai'i State Archives

Increasing Access to Information

Problem Space:

How do we connect the People of Hawai'i with their documentary history and heritage so they can find their kupuna and their legacy?

Constraints:

- Limited ability to travel
- Massive amounts of raw data to browse through
- Little understanding of record making process of the past

Hawaii State Archives

Mission: To collect, arrange, describe the Public Archives – any record that protects YOUR Rights, Identity, Property or History

- Started collection in 1843
- Oldest record dates to 1790, new additions every month
- Grown to over 14,000 boxes of records and 500,000 photographs

Given this MASSIVE amount of information, how does the average researcher find what they are looking for?

Na mea i hanau mai Waikiki a Kamaohala
mai ka la 10 Oka 1861 a hiki Jan 1. 1862

Ma Waikiki

1861	Ina Heiki	Makua Kane	Mokuahini
Oka 3.	Kahinawe (K)	na	Maria
9	Makuaolea (W)	"	Hanaumoa

Waikiki

Nov 1.	Kanakaole (W)	Ehu	Hanaumoa
Nov 17.	ole inoa	Kekahuna	Keahi

Waikiki, Kapapala.

Nov 1.	Kanakaole (W)	Ehu	Nuuanu
" 12	Olelo (W)	Likai	Kalaauaka
" 17	Kawakine (W)	Paulua	Kekula
Dec 4	Hiehie (W)	Kaha	Kauhane
" 15.	Kalii (K)	Ohule	Kamarao

Waikiki, Papohaku

Dec 5.	Kawaaloli (K)	Hanaumoa	Maae
--------	---------------	----------	------

Waikapa

Oka 27.	Lisobeta (W)	Maliau	Haleliaina
Nov. 18.	Kelikanakale (W)	Kaaipehi	Mahiai

Oka 17
 Heiki
 Hanaumoa

LICENSE TO MARRY.

18 9 20

LICENSE TO MARRY.

17

Liberty is granted to John O. Tompkins Esq
residing at Honolulu, in the Island of Oahu
to marry Miss Lydia W. Park
residing at Honolulu, in the Island of Oahu
there appearing no legal impediment to the said marriage.

Given under my hand, at Honolulu, Island of Oahu
this 13 day of September, 1862

A. Spencer

Agent for granting Marriage
Licenses to Foreigners on Oahu

Kaaepa	Piko	Hawaiian	
(Surname)	(Christian Name)	(Army Serial Number)	(Race: White or Colored)
Residence	Wailuku Maui	TERRITORY OF HAWAII	
(Street and house number)	(Town or City)	(County)	(State)

*Enlisted in **NG Wailuku Maui TH** **Aug 29/15**

†Born in **Honolulu Hawaii** **26 yrs**

Organizations: **Co I 1 Inf Hawaiian NG to disch**

Grades: **Pvt**

Engagements:

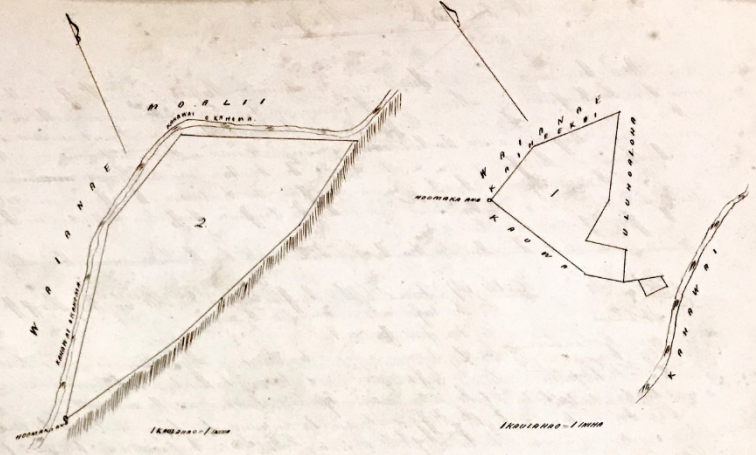
Wounds or other injuries received in action:

‡Served overseas: **No**

§Hon. disch. **June 19/18 SCD** on demobilization.

Was reported **50** per cent disabled on date of discharge, in view of occupation

Remarks:



Hele 312. Timote Kawai'i.

See P 1302 V2. Award Book

Ua hoi mai oia no kona wahi ma Kauhama, ma Lahaina, Moku o Maui, no ka mea ua loa i ka hua wahi no Kukuihiko ana i ka Makohiki 1836 a ua naha haka oia a hiki i hua wanao.
 Oia ka moku e koke ai no Timote Kawai'i, ke kuleana hoi kona malalo ke Ano Aloha. Iua e uku mai oia i ke ke aupuni hapahepa, Alaala, ua kipeka ia ia ka palapala He Aloha.
 Iua mai ia ia ke uku no ka hoholehohole a me ka hohole ana i ka olelo Poni.

- W. H. Lee Ii ka nuni a me ke pua ana i ka olelo ma ka Moku.
- J. W. Robertson Ii ke kipi ana i ka olelo huna.
- S. H. Smith Ii ka hana ana i ka la 15. Iuamata 1832.
- S. Kaulahar Ii ke kipi ana i na olelo a me ke kipi 1/2 aar.
- Ii ke ana ana i ka la
- Ii ke kipi ana
- Ii ke hohole ana i ka olelo Iuamata 30, 1832.

Oia no polona Anaia e W. P. Alexander Iuamata 4.

Hele 5. He ana kuleana no Timote e wahi ana ma ke Moku o Kauhama ma ke kuleana hohole Lahaina, Maui.
 Iuamata ana ma ke kipi Kama Kauhama a hoi aku.

Mau 28° Kauhama	1.03	Kaulahar	e fili ana me ka kipi laka.	Moku.
Mau 61 1/2° Kauhama	1.02	"	"	" Kapihi.
Mau 37° Kauhama	0.78	"	"	"
Mau 70 1/2° Kauhama	0.92	"	"	" Moku.
Kama 23 1/2° Kauhama	0.80	"	"	" laka.
Kama 70° Kauhama	0.58	"	"	"
Kama 20 1/2° Kauhama	0.90	"	"	"
Kama 58 1/2° Kauhama	0.86	"	"	" Moku.

a hiki e kipi i hua haka ai.
 Ka Hele Iuamata huna ana Hele.

By *Shrover "Rogers" Lass*

No. _____

Age, *30 yrs*
Business, *Mercantile*
Height, *5 feet 11 inches*
Hair, *Brown*
Eyes, *Blue*
Complexion, *Fair*

Permission is hereby granted to *Daniel*
Bulman Esq
a native of *Great Britain*

lately residing at *Honolulu*
in the Hawaiian Islands, to pass out of the Ports
thereof, on *his* destination to *England*
H. S. Wales via Tahiti

And all officers of His Majesty's Govern-
ment are required, and all Authorities of other
Friendly States are requested to render *him*
all requisite lawful assistance.

Signature.

D. Bulman

Given under my hand and with the Seal of the Hawaiian Kingdom, at the
Foreign Office, Honolulu, this *3^d* day of *July*
185

J. J. King
Minister of Foreign Relations.

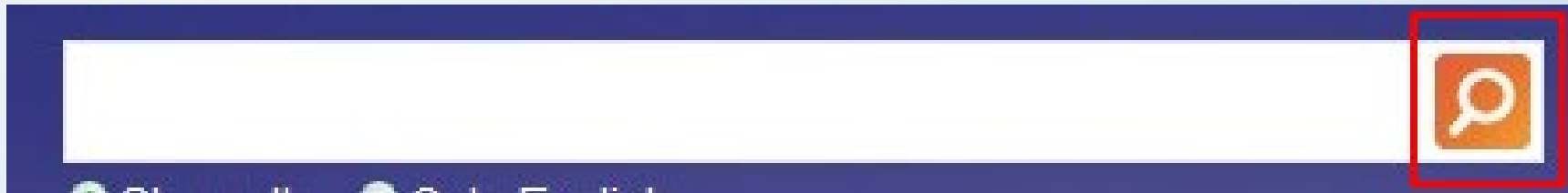
1st Circuit Court: Equity Case Files, 1847-1899.	004	Series	13
1st Circuit Court: Probate Case Files, 1847-1900.	007	Series	83
Wills, 1852-1916.	008	Series	5
2nd Circuit Court: Divorce Case Files, 1848-1900.	011	Series	3
2nd Circuit Court: Probate Records, 1849-1917.	012	Series	38
3rd Circuit Court: Divorce Case Files, 1854-1899.	015	Series	4
3rd Circuit Court: Probate Records, 1854-1897.	016	Series	10
4th Circuit Court: Divorce Case Files, 1890-1899.	017	Series	2
4th Circuit Court: Equity Case Files, 1898-1914.	018	Series	11
5th Circuit Court: Divorce Case Files, 1852-1899.	025	Series	2
5th Circuit Court: Probate Records, 1851-1914.	027	Series	14
Statistical Summaries of Accidents	039	Series	4
Citizens Guard Commissions and 1895 Census of Honolulu	058	Series	2
Records of Passenger Arrivals and Departures	082	Series	37
Seamen's Records	088	Series	1
Hawaii Corporations (Dissolved) Case Files	158	Series	0
1968 Constitutional Convention: Convention Journals	159	Series	1
1968 Constitutional Convention: Delegate Proposals	162	Series	1
1968 Constitutional Convention: Committee Proposals	163	Series	1
1968 Constitutional Convention: Resolutions	164	Series	1
1968 Constitutional Convention: Committee Reports	165	Series	1
1968 Constitutional Convention: Record Cards	168	Series	1
1968 Constitutional Convention: Final Cumulative Index and Status of Proposals and Resolutions	169	Series	1
Tax Officer Records	193	Series	1
Census Returns	194	Series	7

Census Tables & Statistical Reports	195	Series	1
Enumerator Records	196	Series	1
Birth, Death and Marriage Statistics	197	Series	1
1978 Constitutional Convention: Communications	216	Series	2
Vital Statistics Collection	223	Series	5
Tax Assessment and Collection Records, 1847-1975	224	Series	498
Territory: Records of the Clerks	228	Series	280
Annual Profit Corporation Exhibits	231	Series	86
Annual Non-Profit Corporation Exhibits	231A	Series	0
Partnership Registration Statements	232	Series	2
Interior: Naturalization Records	234	Series	4
Chinese Passports	270	Series	3
Chinese Enter and Return Permits	271	Series	2
Foreign Office: Chinese Bureau: Special Permits for Chinese Minors to Enter the Kingdom, 1891-1898	272	Series	3
Chinese Women's Permits	273	Series	1
Special Certificates for Hawaii Born Children of Chinese Parentage	274	Series	2
Special Certificates of Naturalized Chinese	275	Series	7
Permits for Chinese Clergymen, Teachers & Colportuers	276	Series	6
Conditional Permits for Chinese Laborers and Domestic	277	Series	8
Cancelled Tax Map Prints	278	Series	72
Voter Registration Records	281	Series	20
DLNR: Mahele Book	285	Series	1
DLNR: Board of Commissioners to Quiet Land Titles: Registers	286	Series	8
DLNR: Board of Commissioners to Quiet Land Titles: Testimonies	287	Series	10

DLNR: Board of Commissioners to Quiet Land Titles: Patents Upon Confirmation of Land Commission	289	Series	17
DCCA: Partnership Change of Name Statements and Dissolution Statements	307	Series	4
DCCA: Partnership Annual Statements	308	Series	6
Foreign Office Correspondence with Hawaiian Officials Abroad, 1842-1900	404	Series	1
Outgoing Correspondence, 1843-1900.	410	Series	2
[Reserved for FO&EX]	442	Series	1
Journals and Ledgers	468	Series	0
Administrative Records of the Chinese Bureau	493	Series	6
Permits for Temporary Residence of Chinese Merchants and Travelers	494	Series	1
BUR. Of IMMIGRATION. Certificates of Identification, 1895-1897.	516	Series	5
BUR. Of IMMIGRATION. Financial Records, 1884-1900.	519	Series	1
BUR. Of IMMIGRATION. National Registers, 1896-1897.	523	Series	2
Finding Aids	FA	Series	2
Chronological Files, 1850-1900	FO&EX	Series	3
Genealogy Books	G	Series	4
Governor Carter: Correspondence	GOV2	Series	1
Interior	INT	Series	6
Commission on Boundaries: Records	INT1	Series	3
Manuscript Collection - George Robert Carter	M022	Series	1
Manuscript Collection - Henry Alpheus Pierce Carter	M023	Series	1
Manuscript Collection - Queen Emma	M045	Series	2
Manuscript Collection - Lorrin Andrews Thurston	M144	Series	1
Manuscript Collection - Robert Crichton Wyllie	M162	Series	1
Manuscript Collection - Archibald Scott Cleghorn	M164	Series	5
Manuscript Collection - Charles Samuel Stewart	M444	Series	1



[This Photo](#) by Unknown Author is licensed under [CC BY-NC-ND](#)



[This Photo](#) by Unknown Author is licensed under [CC BY-SA](#)

Garbage in, Garbage out



[This Photo](#) by Unknown Author is licensed under [CC BY-SA](#)

How do you provide QUALITY

- Requires manual intervention
- Manual data entry
- Appropriate metadata to allow for targeted search
- None of which is available from SCANNED images
- Requires lots of people pounding on lots of keyboard to create value added service.

WE NEED YOUR HELP MAKING THE PROCESS BETTER

Current Process

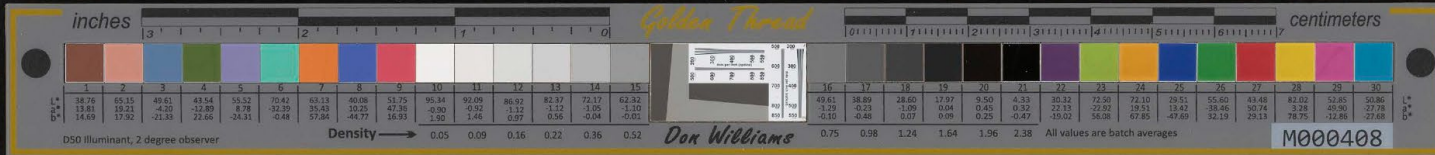


How do we index now?

- Scan a series of records
 - High fidelity, uncompressed images (= very large individual files)
- Create single, multipage PDF file
- Load onto a shared, remotely accessible drive
- Create a spreadsheet template
- Each volunteer assigned a 'chunk' and their own spreadsheet

Ouch, that's REALLY manual

- Problems this process introduces:
 - Assumes all volunteers work at same space
 - Makes difficult to 'proof' work
 - Requires multiple windows open and flip-flopping between
 - Left is a bunch of related, but separate files



PP38-1-
001-S

HONOLULU - City of, 1853 (2)

View of Honolulu # 5
 Entire Plate: Neg. # 18,689 (4 x 5)
 Bottom right corner: Mr. Sea, #16,987_{4x5}
 Bottom left corner: Sumner, # 16,988_{4x5}
 Right side 3rd from top, Dr. Ford,
 # 18,664_(4x5)

MARC ID No 01471

File Home Insert Draw Page Layout Formulas Data Review View Help Acrobat Search

Clipboard Font Alignment Number Styles Cells Editing

Calibri 12 A A B I U Font Color

General \$ % , \$0.00 .00

Conditional Formatting Insert Delete Format Cell Styles

B1 fx Collection Name (English)

	A	B	C	D	E	F	G	H	I	J	K	L	M	N	O	P	Q	R	S	T	U	
		Collection Name (English)	Collection Name (Olelo Hawaii)	Box	Box Title (English)	Box Title (Olelo Hawaii)	Folder	Folder Name (English)	Folder Name (Olelo Hawaii)	Image Number	Title	Written Description	Photo Credit	From Collection	Gift Of	Date Received	Negative Number	Negative Size	Display Date	Start date	End Date	
1	Series	General	Ka 'Ohina Ki'i	38	Honolulu	Kūlanakauhal e o Honolulu:	1	Honolulu, City - 1850s	Honolulu, Kūlanakauhal	1	Honolulu - City of, 1853	View of Honolulu, # 5. Drawn from nature & on stone by P. Emmert. Lithograph of View of Honolulu, # 4. From the Catholic Church. Sketched from Nature by Paul					18689; 16987 (Mr. 1956; 18663 (D. N.	4x5	1853	1/1/1853	12/31/18	
2	PP	Photographic	Ka 'Ohina Ki'i	38	Honolulu	Kūlanakauhal e o Honolulu:	1	Honolulu, City - 1850s	Honolulu, Kūlanakauhal	2	Honolulu - City of, 1853	[... Trust Co.]. King St. (Album 2a, Pg. 14)					2010	4x5	circa 1850	1/1/1850	12/31/18	
3	PP	Photographic	Ka 'Ohina Ki'i	38	Honolulu	Kūlanakauhal e o Honolulu:	1	Honolulu, City - 1850s	Honolulu, Kūlanakauhal	4	Honolulu	(Album 2a, Pg. 13)					17024	4x5	circa 1850	1/1/1850	12/31/18	
4	PP	Photographic	Ka 'Ohina Ki'i	38	Honolulu	Kūlanakauhal e o Honolulu:	1	Honolulu, City - 1850s	Honolulu, Kūlanakauhal	5	Honolulu - City of, 1853	View of Honolulu, # 6; 1853; Drawn from nature & on stone by P. Emmert.					16709; 16335		1853	1/1/1853	12/31/18	
5	PP	Photographic	Ka 'Ohina Ki'i	38	Honolulu	Kūlanakauhal e o Honolulu:	1	Honolulu, City - 1850s	Honolulu, Kūlanakauhal	6	Honolulu - City of	View of Honolulu, # 2. 1853. Sketched from Nature by Paul Emmert. Lithograph King St. from Waity Building looking Ewa; About 1857.					16708; 1853; 16994 (John	4x5	1853	1/1/1853	12/31/18	
6	PP	Photographic	Ka 'Ohina Ki'i	38	Honolulu	Kūlanakauhal e o Honolulu:	1	Honolulu, City - 1850s	Honolulu, Kūlanakauhal	7	Honolulu	First McIntyre Building. Fort Street; about 1854					1876		circa 1857	1/1/1857	12/31/18	
7	PP	Photographic	Ka 'Ohina Ki'i	38	Honolulu	Kūlanakauhal e o Honolulu:	1	Honolulu, City - 1850s	Honolulu, Kūlanakauhal	8	Honolulu - City of	Copy of Stangenwald photo; original (at Bishop Museum) probably taken after	Copy of Stangenwald Photo		Fred Schoen	7-18-63	16873	5x7, 4x5	circa 1857	1/1/1856	12/31/18	
8	PP	Photographic	Ka 'Ohina Ki'i	38	Honolulu	Kūlanakauhal e o Honolulu:	1	Honolulu, City - 1850s	Honolulu, Kūlanakauhal	9	Honolulu - City of	Honolulu from Punchbowl 1859	Williams Studio				199-A		1859	1/1/1859	12/31/18	
9	PP	Photographic	Ka 'Ohina Ki'i	38	Honolulu	Kūlanakauhal e o Honolulu:	1	Honolulu, City - 1850s	Honolulu, Kūlanakauhal	10	Honolulu in 1853	View of Honolulu, # 1. Sketched from nature by Paul Emmert. Lith. of Britton & View of Honolulu. # 3. Sketched from nature by Paul Emmert. Lith. of Britton & Honolulu House. Honolulu Hale, where executive Ministers had their offices; Honolulu House. Original sketch by Manjiro around 1850. See Book "Voyager Honolulu, Oahu, Nov. 1840. J. D. Dana from shipboard. [...]. Subject - City of Diamond-head. From Look-out. Drawn from nature & on stone by G. H. Burgess.	R. S. Kuykendall				1957-A; 15693	8x10, 4x5, 5x7	1853	1/1/1853	12/31/18	
10	PP	Photographic	Ka 'Ohina Ki'i	38	Honolulu	Kūlanakauhal e o Honolulu:	1	Honolulu, City - 1850s	Honolulu, Kūlanakauhal	11	Honolulu - City of 1853	View of Honolulu. # 3. Sketched from nature by Paul Emmert. Lith. of Britton & Honolulu House. Honolulu Hale, where executive Ministers had their offices; Honolulu House. Original sketch by Manjiro around 1850. See Book "Voyager Honolulu, Oahu, Nov. 1840. J. D. Dana from shipboard. [...]. Subject - City of Diamond-head. From Look-out. Drawn from nature & on stone by G. H. Burgess.	Britton & Rey				18688; 18540 (Dr.	4x5	1853	1/1/1853	12/31/18	
11	PP	Photographic	Ka 'Ohina Ki'i	38	Honolulu	Kūlanakauhal e o Honolulu:	1	Honolulu, City - 1850s	Honolulu, Kūlanakauhal	12	Honolulu - City of 1853	Honolulu from Punchbowl 1859	Honolulu Academy of Honolulu		Richard Greer, July, 1971		16832	4x5		1/1/1853	12/31/18	
12	PP	Photographic	Ka 'Ohina Ki'i	38	Honolulu	Kūlanakauhal e o Honolulu:	1	Honolulu, City - 1850s	Honolulu, Kūlanakauhal	13	Honolulu, 1853	Honolulu from Punchbowl 1859	Honolulu Academy of Honolulu				1996.112	4x5	circa 1850s	1/1/1850	12/31/18	
13	PP	Photographic	Ka 'Ohina Ki'i	38	Honolulu	Kūlanakauhal e o Honolulu:	1	Honolulu, City - 1850s	Honolulu, Kūlanakauhal	14	Honolulu, City of - 1850's	Honolulu, Oahu, Nov. 1840. J. D. Dana from shipboard. [...]. Subject - City of Diamond-head. From Look-out. Drawn from nature & on stone by G. H. Burgess.	R. J. Baker		R. J. Baker	1952	16611		circa 1850s	1/1/1850	12/31/18	
14	PP	Photographic	Ka 'Ohina Ki'i	38	Honolulu	Kūlanakauhal e o Honolulu:	1	Honolulu, City - 1850s	Honolulu, Kūlanakauhal	15	Honolulu, City of - 1857	from Sketch by Paul Emmert	R. J. Baker		R. J. Baker		16554		1857	1/1/1857	12/31/18	
15	PP	Photographic	Ka 'Ohina Ki'i	38	Honolulu	Kūlanakauhal e o Honolulu:	1	Honolulu, City - 1850s	Honolulu, Kūlanakauhal	16	Honolulu, City of - 1853	Port of Honolulu -1857; Drawn from Nature on Stone By G. H. Burgess; Entered	Marion Morse,			1975	16653	4x5	1853	1/1/1853	12/31/18	
16	PP	Photographic	Ka 'Ohina Ki'i	38	Honolulu	Kūlanakauhal e o Honolulu:	1	Honolulu, City - 1850s	Honolulu, Kūlanakauhal	17	Honolulu Harbor	Nature on Stone By G. H. Burgess; Entered	Britton & Rey		R. S. Kuykendall		15710	8x10	1857	1/1/1857	12/31/18	
17	PP	Photographic	Ka 'Ohina Ki'i	38	Honolulu	Kūlanakauhal e o Honolulu:	2	Honolulu, City - 1860-	Honolulu, Kūlanakauhal	18	Honolulu	Pantheon - Hotel & Fort. (Album 4, Pg. 35)					2056	6x8, 4x5	1860	1/1/1860	12/31/18	
18	PP	Photographic	Ka 'Ohina Ki'i	38	Honolulu	Kūlanakauhal e o Honolulu:	2	Honolulu, City - 1860-	Honolulu, Kūlanakauhal	19	Honolulu - City of								1862	1/1/1862	12/31/18	
19	PP	Photographic	Ka 'Ohina Ki'i	38	Honolulu	Kūlanakauhal e o Honolulu:	2	Honolulu, City - 1860-	Honolulu, Kūlanakauhal	20	Honolulu	PP-38-2-003 has been refilled to PP 38-3-020										
20	PP	Photographic	Ka 'Ohina Ki'i	38	Honolulu	Kūlanakauhal e o Honolulu:	2	Honolulu, City - 1860-	Honolulu, Kūlanakauhal	21	Honolulu	Queen street looking ewa from	Henry L. Chase				17750	4x5	1865	1/1/1865	12/31/18	
21	PP	Photographic	Ka 'Ohina Ki'i	38	Honolulu	Kūlanakauhal e o Honolulu:	2	Honolulu, City - 1860-	Honolulu, Kūlanakauhal	22	Honolulu											
22	PP	Photographic	Ka 'Ohina Ki'i	38	Honolulu	Kūlanakauhal e o Honolulu:	2	Honolulu, City - 1860-	Honolulu, Kūlanakauhal	23	Honolulu											

PP Box 38

We need a
better tool!







This Photo by Unknown Author is licensed under [CC BY-SA](#)

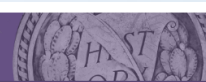
Crowdsourcing tool with PIZZAZZ!

- Engage with our volunteer indexers is a FUN, Interactive way
- Provide better tools for doing the job
 - Split screen viewer with zoom
 - Tabbing, configurable index boxes along the bottom
 - Centralize ALL projects so it doesn't matter if you are fast or slow
 - Common database
 - Allow for 'second set of eyes' to confirm correct entry (double blind)
- Incentivize volunteers to reach for excellence
 - Give them points for each index box filled, records indexed
 - Keep a leader board for the point winners
 - Give them virtual badges and interactive achievements



Not going this
alone...





Citizen Archivist

[Register and Get Started](#)

[Citizen Archivist Missions](#)

[Mission History](#)

[National Archives Catalog](#)

[Resources](#)

[FAQs](#)

[Join Us on History Hub!](#)

[Subscribe to our Newsletter](#)

[Contribution Policy](#)

Citizen Archivist Missions



Ready to start tagging and transcribing? We've curated these topical missions to help you jump in and contribute! Click on a topic that interests you, and it will bring you right to those historical records in our Catalog. Tagging and transcribing makes these records more accessible to everyone. New missions are added and updated regularly, so check back often to see what's new.

New to our Citizen Archivist program? Learn how to [register and get started](#).

Already have an account? [Login here](#).



Case Files of Attorneys, Agents, Pensioners, and Others 1886 – 1933

Help us **transcribe** case files relating to attorneys who were disbarred for misconduct and files relating to notaries public, justices of the peace, postmasters, and others authorized to administer oaths who committed either inadvertent or intentional misconduct in executing pension vouchers.



Submarines

Help us **transcribe** records relating to submarines including patrol reports, reports of sinking enemy submarines, and more. Are you a submarine expert? Share any additional details you many know about the record in the comments field.



African American History

The National Archives holds a wealth of material documenting the African American experience. Explore our records documenting African American History and help **transcribe** these records to make them more searchable and discoverable in the Catalog. More information about African American research can be found on our website, archives.gov/research/african-americans



TVA Family Removal and Population Readjustment Case Files, 1937 – 1948

Transcribe case histories and family surveys of individuals affected by the Tennessee Valley Authority's (TVA) acquisition of land for dam and power production projects. Find a page without a blue tag and start transcribing. Thanks to Citizen Archivist Alex for the suggestion!



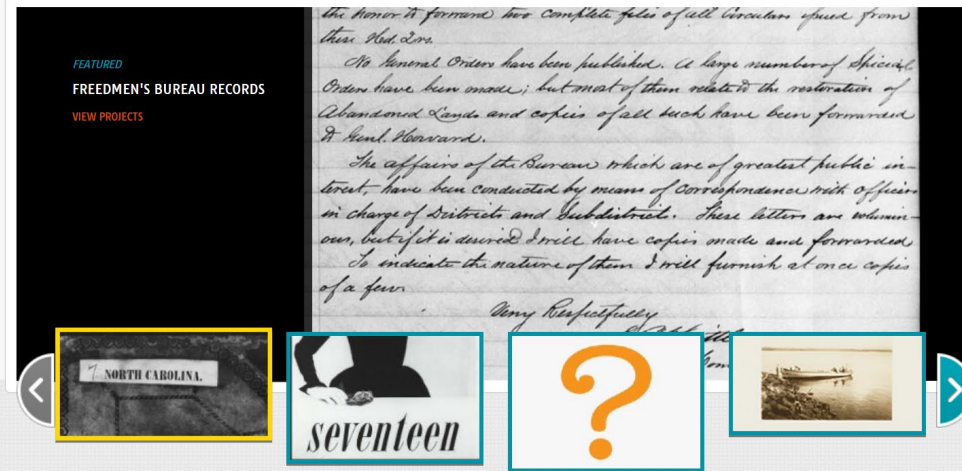
Index to Final Pension Payment Vouchers, 1818 – 1864

Transcribe these index cards that include name, agency of payment, date of act, date of payment and date of death.



Award Cards, 1942 – 1963

Help us **transcribe** this large series of index cards for awards that include the Purple Heart, Air Medal Decoration, Commendation Medal, Distinguished Service Cross, and Distinguished Flying Cross. Information included consists of: name, service number, rank, general order number, order date and issuing organization, award type, date awarded and more.



JOIN US!

LEARN HOW TO TRANSCRIBE

Become a Smithsonian Digital Volunteer and help us make historical documents and biodiversity data more accessible.

Join 33,326 "volunpeers" to add more to the total 670,413 pages of field notes, diaries, ledgers, logbooks, currency proof sheets, photo albums, manuscripts, biodiversity specimens labels, and historic audio recordings, that have been collaboratively transcribed and reviewed since June 2013 - [Get started now!](#)

Partner on projects and ask your fellow [#volunpeers](#) for best tips and tricks.

You'll also find updates and behind-the-scenes spotlights on [Facebook](#), [Instagram](#), and [YouTube](#).

Follow us on Twitter and learn more about projects: [@TranscribeSI](#)

Help keep the Transcription Center growing! Support our work through a [donation](#).

Tweets by [TranscribeSI](#)

BROWSE PROJECTS

Select a category below to begin browsing projects.

Select a Category

CHECK OUT NEW PROJECTS

Knabenshue Collection - Reports

925 CONTRIBUTIONS

The A. Roy Knabenshue Collection contains approximately three and a half cubic feet of material relating to the life and career of a daring aeronaut and the United States' first successful dirigible pilot. The collection includes correspondence, photographic material, drawings of aircraft, and flight records. The material spans over seventy years, from the end of the nineteenth century to the nineteen-sixties.

Faris and Yamna Naff Arab American Interviews- Zakem, Barakat, Abraham, Khoury and Cory, 1962 July (OT0003_02-000001)

136 CONTRIBUTIONS

PLEASE NOTE: MANY OF THESE RECORDINGS INCLUDE ARABIC LANGUAGE. WHEN APPROPRIATE, PLEASE TRANSCRIBE WHAT IS SPOKEN IN ARABIC. IF YOU ARE UNABLE TO TRANSCRIBE IN ARABIC PLEASE DO NOT MARK THE PAGE COMPLETE. SO

HAPPENING NOW

[smomara123](#) transcribed a page from South Carolina Assistant Commissioner, Registered Letters Received, Entered in Registers 4 & 5, F-J, Nov. 1866-Dec. 1867, Part 1

[Jaya Cox](#) transcribed a page from North Carolina Field Offices, Subordinate Field Offices: Hillsboro, Letters Received, May 1866-Dec. 1868, Part 2

[lisapete](#) transcribed a page from Project PHaEDRA - Williamina P. Fleming - Reductions of Photographic Observations #9

[Cathy5933](#) transcribed a page from North Carolina Field Offices, Subordinate Field Offices: Hillsboro, Letters Received, May 1866-Dec. 1868, Part 2

[mandc](#) reviewed a page from South Carolina Assistant Commissioner, Registered Letters Received, Entered in Registers 4 & 5, F-J, Nov. 1866-Dec. 1867, Part 1

[jlp716](#) marked for review a page from South Carolina Assistant Commissioner, Registered Letters Received, Entered in Registers 4 & 5, F-J, Nov. 1866-Dec. 1867, Part 3

[penhiSTORY](#) reviewed a page from North Carolina Field Offices, Subordinate Field Offices: Hillsboro, Letters and Endorsements Sent and Received, Vol. 128

October 2020 Statistics

Participating Indexers: 46
 Total Lines Indexed: 25450
 Total Pages Indexed: 944

October 2020 Top Indexers

1	Malka C. Lines/Records Indexed: 6342 Pages Indexed: 253 User Group: IGRA Hebrew 	
2	amos s. Lines/Records Indexed: 6000 Pages Indexed: 222 User Group: IGRA Hebrew 	
3	orna k. Lines/Records Indexed: 3564 Pages Indexed: 194 User Group: IGRA Hebrew 	
4	mira k. Lines/Records Indexed: 1158 Pages Indexed: 68 User Group: IGRA Hebrew 	
5	Micha F. Lines/Records Indexed: 925 Pages Indexed: 34 User Group: IGRA Hebrew 	
6	Uri L. Lines/Records Indexed: 795 Pages Indexed: 31 User Group: IGRA Hebrew 	
7	Esther R. Lines/Records Indexed: 701 Pages Indexed: 22 User Group: IGRA Hebrew 	
8	yariv t.	

Statistics for All Time

Participating Indexers: 289
 Total Lines Indexed: 921087
 Total Pages Indexed: 76071

Top Indexers of All Time

1	amos s. Lines/Records Indexed: 182502 Pages Indexed: 20582 User Group: IGRA Hebrew 	
2	orna k. Lines/Records Indexed: 167443 Pages Indexed: 9122 User Group: IGRA Hebrew 	
3	Malka C. Lines/Records Indexed: 84796 Pages Indexed: 3851 User Group: IGRA Hebrew 	
4	Barbara E. Lines/Records Indexed: 78755 Pages Indexed: 2541 User Group: IGRA English 	
5	Matthew K. Lines/Records Indexed: 58491 Pages Indexed: 1806 User Group: ITS 	
6	Esther R. Lines/Records Indexed: 47482 Pages Indexed: 1891 User Group: IGRA Hebrew 	
7	אתר Lines/Records Indexed: 30238 Pages Indexed: 1612 User Group: IGRA Hebrew 	
8	Yael R.	

pybossa



PYBOSSA is the ultimate crowdsourcing framework to analyze or enrich data that can't be processed by machines alone.

GET PROFESSIONAL SUPPORT FOR PYBOSSA

Batteries included!

*PYBOSSA is
free and open source*

Get started

1 Install a virtual environment

2 Download PYBOSSA

3 Test PYBOSSA

You have to install Vagrant and VirtualBox to run...

Get the code from Github

You are ready to go! Run the vagrant up and play...

This website uses cookies to ensure you get the best experience on our website.

[Learn more](#)

Got it!

But we can't do this without you...



Mahalo nui loa

Dr. Adam Jansen
State Archivist
Hawai'i State Archives
Adam.Jansen@Hawaii.gov