

# *Hawaii Broadband Update*

## *October 2022*



# *Hawaii Broadband Update October 2022*



**INTERNET  
FOR ALL**

The Coronavirus Capital Projects Fund (Capital Projects Fund) will address many challenges laid bare by the pandemic, especially in rural America and low- and moderate-income communities, helping to ensure that all communities have access to the high-quality, modern infrastructure, including broadband, needed to access critical services.

The American Rescue Plan provides **\$10 billion** in payments to eligible governments to carry out critical capital projects that directly enable work, education, and health monitoring, including remote options, in response to the public health emergency.

## **FACT SHEET: Biden-Harris Administration's "Internet for All" Initiative: Bringing Affordable, Reliable High-Speed Internet to Everyone in America**

President Biden's Bipartisan Infrastructure Law brought together Republicans, Democrats, and Independents to better connect the American people through roads, bridges, airports, and the internet. The law included **\$65 billion** in investment to ensure all Americans can access affordable, reliable, and high-speed internet – **Internet for All**. Reliable, high-speed internet is vital to work, learn, and compete in a 21st-century economy, which is why the Biden-Harris Administration, through the U.S. Department of Commerce's National Telecommunications and Information Administration (NTIA), is launching the Internet for All initiative that includes three programs funded by the Bipartisan Infrastructure Law. NTIA has been tasked to lead this effort by working with states, localities, the private sector, nonprofits, and the American people to build the backbone of America's high-speed internet infrastructure.

FOR IMMEDIATE RELEASE  
Friday, May 13, 2022

Office of Public  
Affairs

[publicaffairs@doc.gov](mailto:publicaffairs@doc.gov)

### ***Highlights for Hawaii***

- ACP: 30/mo, 75/mo
- CPF: 115m
- BEAD: ~250-300m
- DE Plan: 570k
- DE Capacity: ~14m
- TBC (DHHL): 90m
- MMG: ~80-100m  
(competitive)

# Broadband Context for Hawaii



## Broadband 101

Access, Equity and Literacy, Last Mile, Middle Mile, Governance and Sustainability

### Work

Facilitates job search, application, training and hiring. Work from anywhere, telework, increased productivity



### Education

Increases access and outreach to endless information resources. Remote education, skill sharing, academic collaboration



### Economy

Fosters growth, competition and enhances productivity. e-commerce, online business, globalization



### Healthcare

Streamlines healthcare management and clinical information exchange. Patient-centered care, telehealth



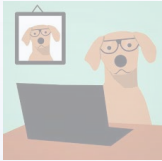
### Government

Improves access to services, streamlines transactions, eases platform sharing and news dissemination. Supports emergency services and connections with citizens. Activism, national security, public safety



**'Apakau Ka Lā**

Spreading of the sun's rays

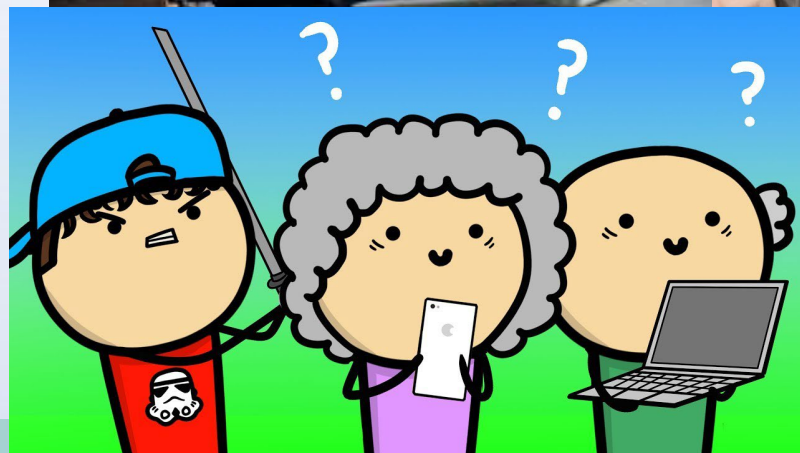
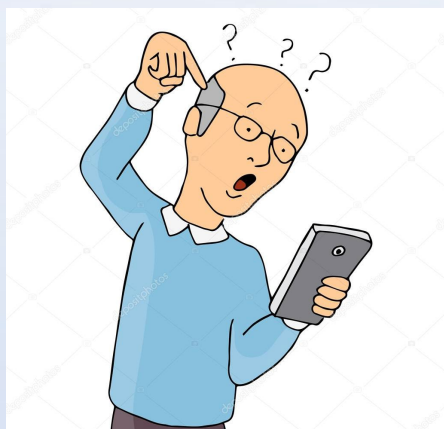
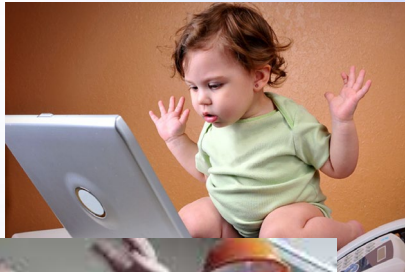




*Hawaii Annual Code Challenge*  
October 15, 2022



**We have lost the internet connection!**



Hawaii Annual Code Challenge  
October 15, 2022

# Our Challenge

- Answer the question: What the `<#&@!*%>` is this Internet thing?
- Critical Success Factor: SIMPLE AND INTUITIVE UI/UX
- Training wheels: Participants learn together with a community digital navigator
- Stickiness: Gamified learning levels
- Collect Data on Hurdles to Adoption





# Resources



## Broadband 101

Access, Equity and Literacy, Last Mile, Middle Mile, Governance and Sustainability

### Work

Facilitates job search, application, training and hiring. Work from anywhere, telework, increased productivity



### Education

Increases access and outreach to endless information resources. Remote education, skill sharing, academic collaboration



### Economy

Fosters growth, competition and enhances productivity. e-commerce, online business, globalization



### Healthcare

Streamlines healthcare management and clinical information exchange. Patient-centered care, telehealth



### Government

Improves access to services, streamlines transactions, eases platform sharing and news dissemination. Supports emergency services and connections with citizens. Activism, national security, public safety



### GLOBAL CONNECTION

Global Internet Fabric of Destinations. Connects North America, South America, Asia, Australia, New Zealand, Japan and Guam.

## HOW THE INTERNET REACHES HAWAII

High-speed internet reaches Hawai'i through a series of undersea cables and satellites that connect the state globally.

1

### FIRST MILE

The internet first enters the Hawaiian Islands. Connects Hawai'i to the global internet through undersea cables and satellite networks.

### SATELLITE

Another solution for First, Middle and Last Mile particularly useful in extremely hard to reach, remote locations, generally with higher costs and latency, and lower bandwidth as compared with terrestrial wired or wireless networks.



2

### MIDDLE MILE

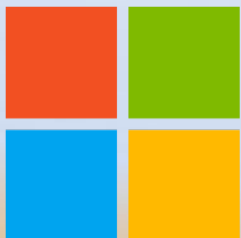
The internet connects Hawai'i's major islands. Interconnects carriers, enterprise and institutional networks; and connects these wholesale and customer networks to First Mile via interisland submarine and terrestrial fiber cables and microwave radio links. Internet exchanges (IXs) and content delivery and caching networks help keep local traffic off expensive First Mile connections.

3

### LAST MILE

The internet reaches Hawai'i end users. AKA "access network", connects Hawai'i residences, business, and institutional users to carriers and institutional networks. Includes Fiber to the Premise (FTTP), local and community networks, Internet Service Provider delivery networks and wireless networks.

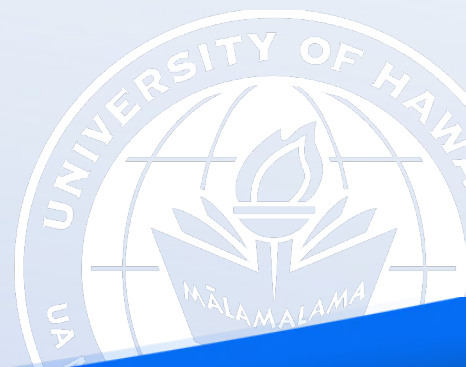
[www.hawaii.edu/broadband/](http://www.hawaii.edu/broadband/)



# Next Step

## Are YOU Up to the Challenge?

[gyoshimi@Hawaii.edu](mailto:gyoshimi@Hawaii.edu)



# Expert-Level Challenge

- Mapping (Google Maps / Google Earth)
- Infrastructure and Access
- Hurdles to Adoption
- Factors Impacting Adoption
- Geo-coded Assets, Hurdles, Factors
- FABRIC Integration (\*HARD/access issues)





*Hawaii Annual Code Challenge*  
October 15, 2022