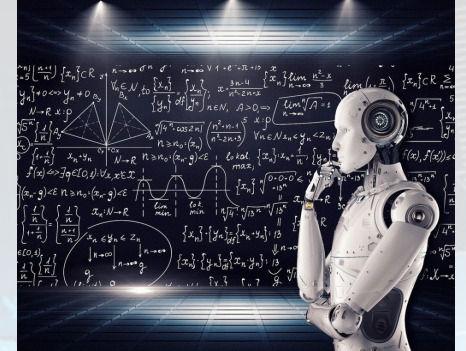
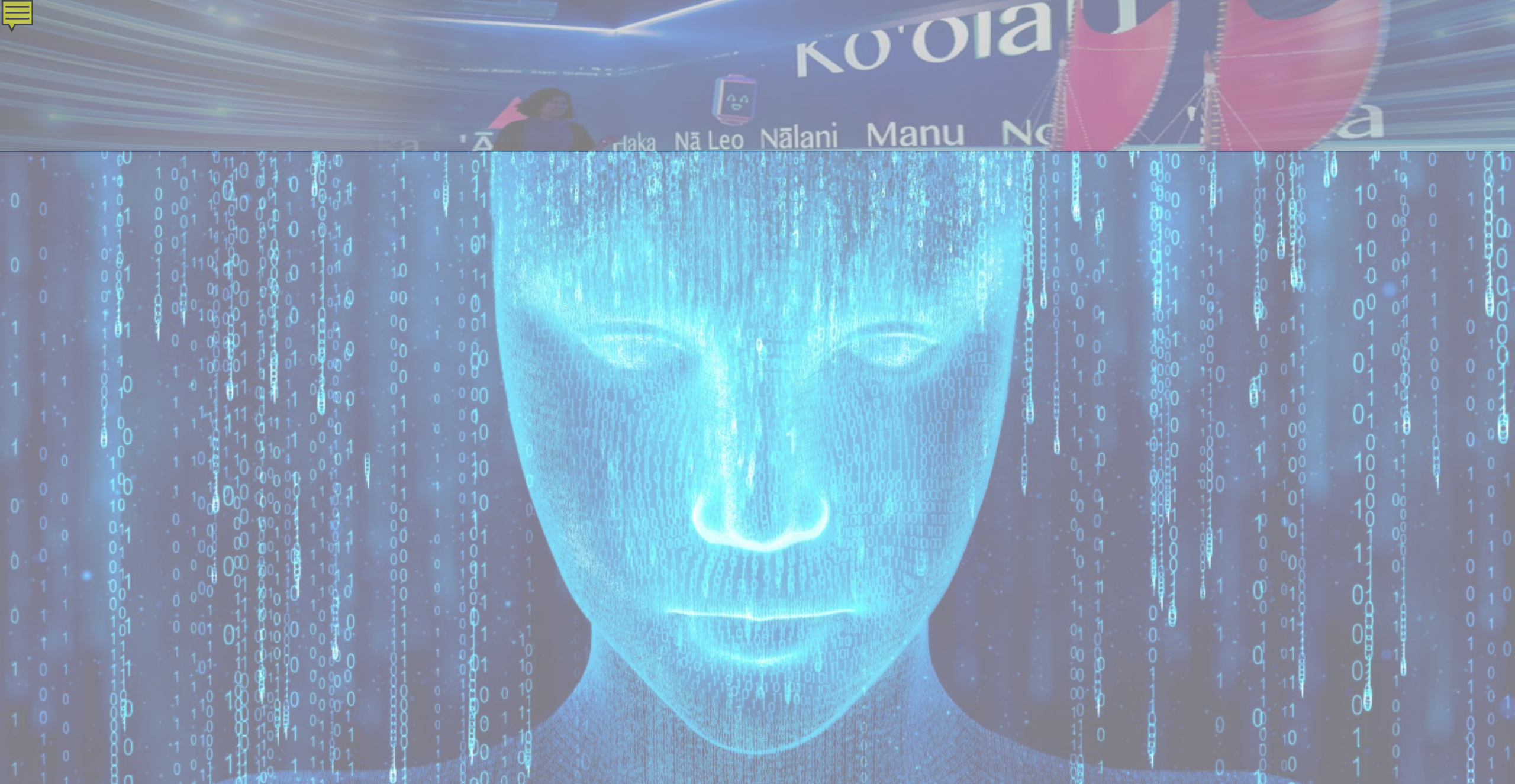


HACC 2023 Challenge University of Hawai'i AI Use Cases



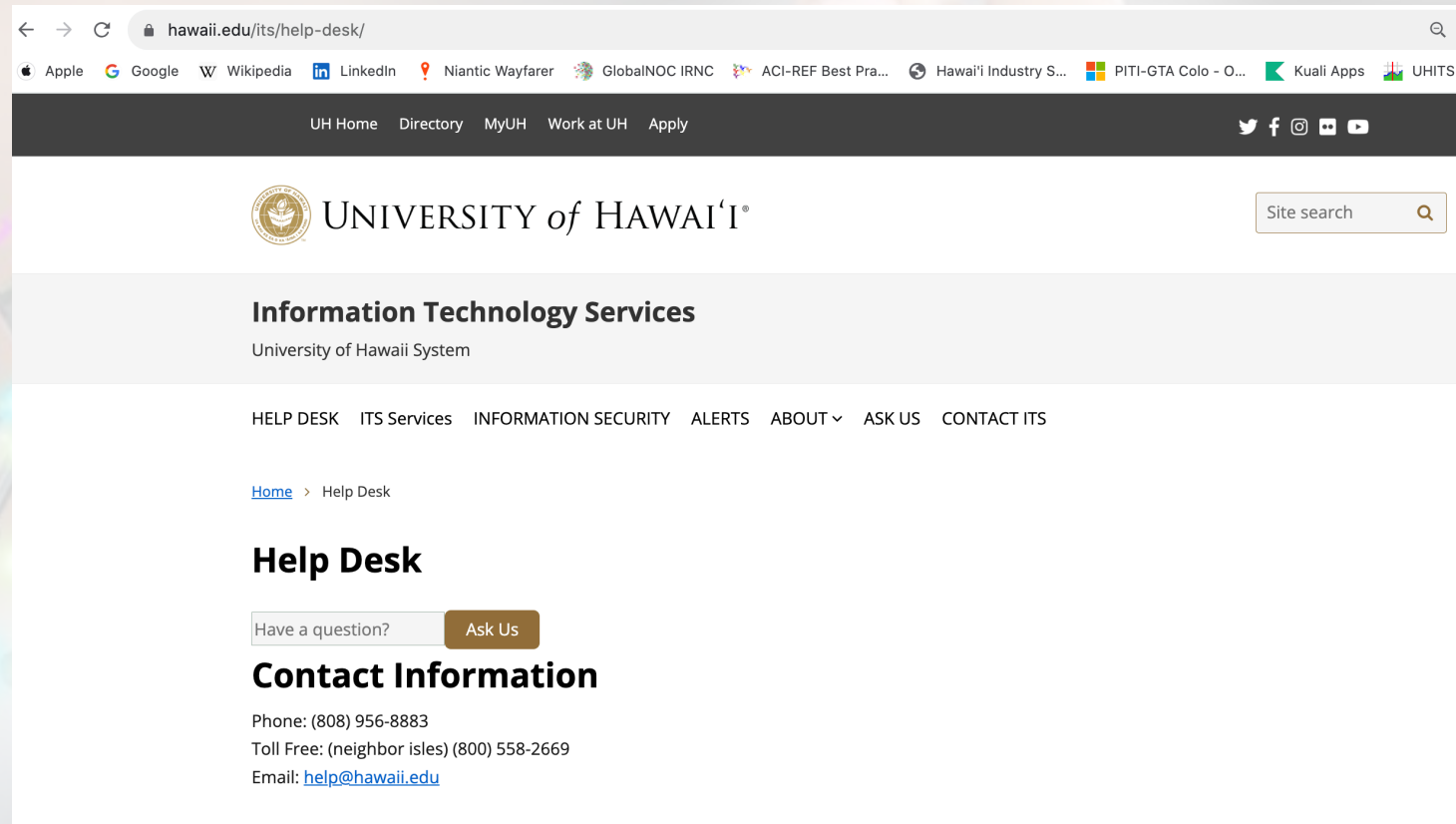




HACC 2023 Challenge – AI Use Cases

- ITS Help Desk – Ask *Us* Knowledgebase

HACC 2023 Challenge – AI Use Cases: *Ask Us* Knowledgebase



The screenshot shows the University of Hawaii ITS Help Desk website. The browser address bar displays `hawaii.edu/its/help-desk/`. The page features a navigation bar with links to UH Home, Directory, MyUH, Work at UH, and Apply. Below this is the University of Hawaii logo and a site search bar. The main heading is "Information Technology Services" with the subtitle "University of Hawaii System". A horizontal menu lists: HELP DESK, ITS Services, INFORMATION SECURITY, ALERTS, ABOUT, ASK US, and CONTACT ITS. A breadcrumb trail shows "Home > Help Desk". The "Help Desk" section includes a "Have a question?" input field and an "Ask Us" button. The "Contact Information" section provides the phone number (808) 956-8883, toll-free number (800) 558-2669, and email `help@hawaii.edu`.

HACC 2023 Challenge – AI Use Cases: Ask Us Knowledgebase



Your search for "UH wireless" returned 26 results

[Setting up UHM wireless on Mac OS X](#)

These instructions are for setting up access to the UHM broadcasted wireless SSID at the UH-Manoa campus when using Mac OS X.

[Disable Android & iOS MAC Address Randomization \(for UH\)](#)
Android 10 and higher iOS 14 Android 10 and higher Android passthrough (<https://www.hawaii.edu/wireless/pt/>) stops working

[Wireless Pass-Through](#)

UH wireless pass through service is available for all UH faculty screen by registering your device(laptop, phone, PDA) on the

[Connecting to the UH Wireless Networks](#)

Welcome to the University of Hawai'i Wireless Network homepage the built-in software in the Windows and MacOS operating systems.

[Setting up UHM Wireless on Windows 10](#)

These instructions are for setting up access to the UHM broadcast Windows key + Q key to open the Search menu. Enter

[UH Manoa Wireless Coverage Map](#)

Quad coverage map: manoa.hawaii.edu/campusmap/wireless

[Basic Online Services for Students, Faculty, and Staff](#)

Your UH Username is valid for the duration of your affiliation standing; faculty and staff must be current employees of UH.

[IT Policy and Guidelines: UH Manoa Wireless Networks](#)

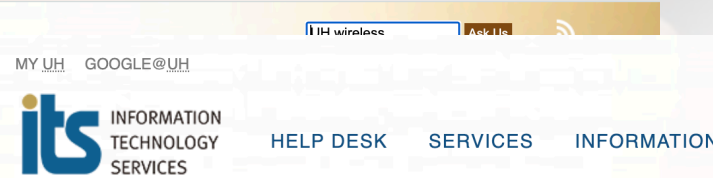
As with all shared resources of the University, policies and guidelines resources for all members of the University community. The UH

[Best Practices for Laptop Users](#)

Laptop computers are smaller, lighter, and more competitively computer enabling them to be more mobile using wireless network

[Wireless Priority Service \(WPS\)](#)

During an emergency, personnel responsible for public safety



Connecting to the UH Wireless Networks

Welcome to the University of Hawai'i Wireless Network homepage. Here you will find software in the Windows and MacOS operating systems.

Note: ITS does not support third party wireless configuration wizards due to the amount of documentation that came with your wireless card to learn how to turn this software on

[General Wireless Setup](#)

[Connecting to the UH Wireless Network](#)

[Wireless Authentication Passthrough](#)

[Wireless Visitor Internet Access \(VIA\)](#)

[Wireless Connectivity Matrix](#)

[UH Manoa Wireless Map](#)

[Wireless Troubleshooting Tips](#)

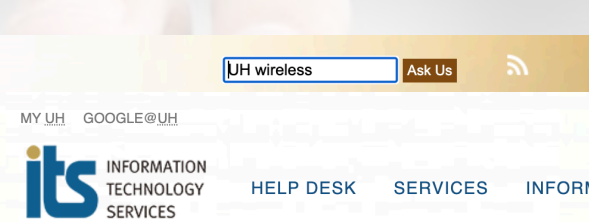
General Wireless Setup

What you need:

- A laptop or desktop computer outfitted with a wireless network adapter that is
- A supported operating system (Windows 10 or MacOS)
- A valid UH Username and password

Connecting to the UH Wireless Network

Please see the Wireless Connectivity Matrix below for the SSID information for your campus.



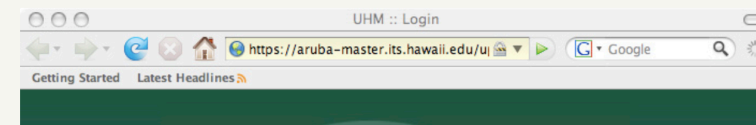
Setting up UHM wireless on Mac OS X

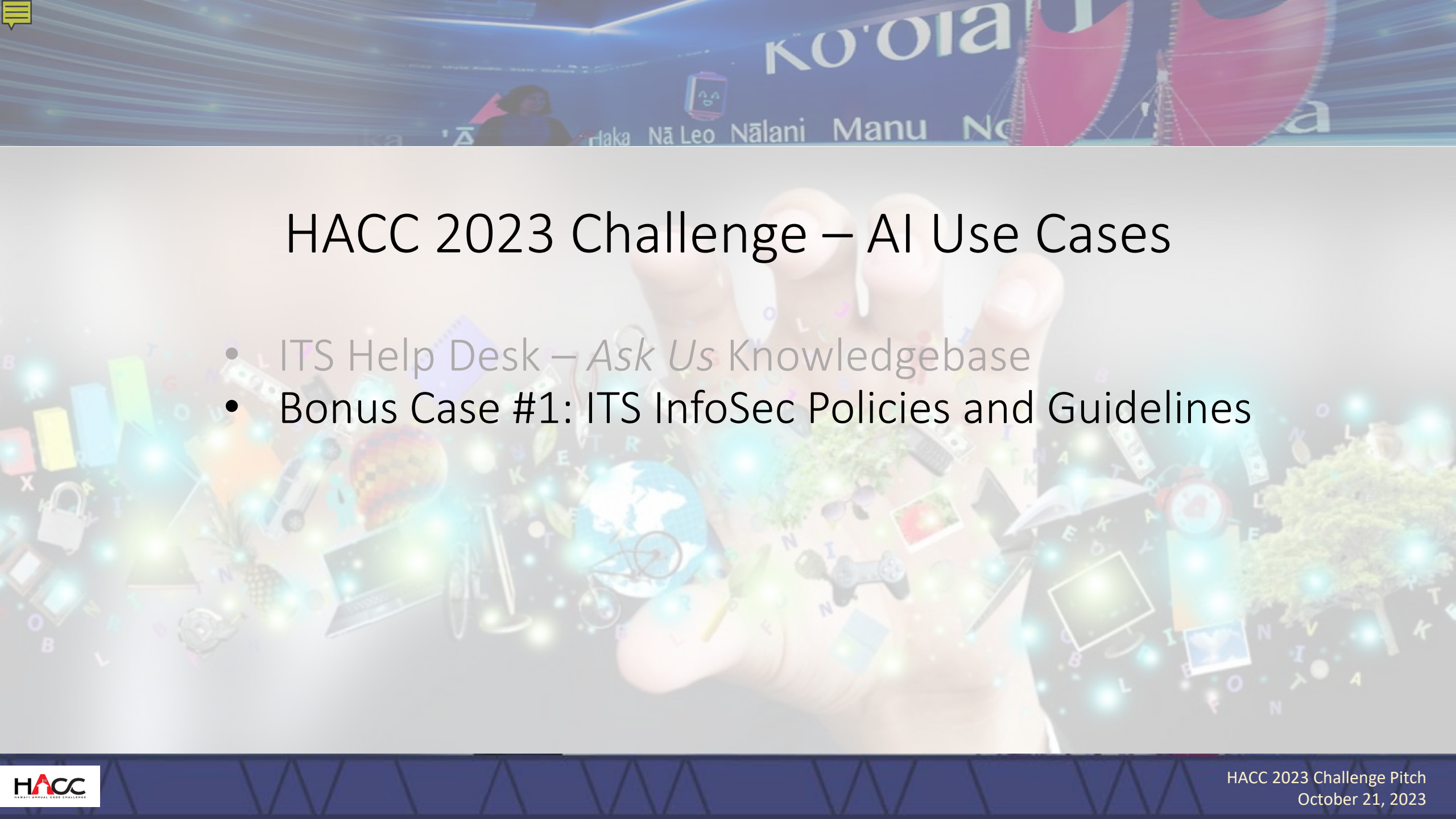
These instructions are for setting up access to the UHM broadcasted wireless SSID at the UH-Manoa campus when using Mac OS X.

First, click on the wireless icon in the upper left corner near the time and date and select UHM. If it is not in the list the signal may be weak or you may not be in the coverage area.



Once connected, launch a web browser, like Safari or Mozilla Firefox, to login to the wireless network. Once logged in you are ready to browse the Web.





HACC 2023 Challenge – AI Use Cases

- ITS Help Desk – *Ask Us* Knowledgebase
- Bonus Case #1: ITS InfoSec Policies and Guidelines

HACC 2023 Challenge – AI Use Cases: InfoSec Policies and Guidelines

Topic	Topic	1 or 2 topics to list
1. <u>Stress</u>	Stress is the body's response to any demand placed on it. It is a state of mind and body.	Stress is a state of mind and body.
2. <u>Stressors</u>	Stressors are the factors that cause stress. They can be physical, chemical, or biological.	Stressors are the factors that cause stress. They can be physical, chemical, or biological.
3. <u>Stress response</u>	The stress response is the body's reaction to a stressor. It involves the release of hormones and the activation of the sympathetic nervous system.	The stress response is the body's reaction to a stressor. It involves the release of hormones and the activation of the sympathetic nervous system.
4. <u>Stress management</u>	Stress management is the process of controlling or reducing the effects of stress. It can be achieved through various techniques such as relaxation, exercise, and cognitive-behavioral therapy.	Stress management is the process of controlling or reducing the effects of stress. It can be achieved through various techniques such as relaxation, exercise, and cognitive-behavioral therapy.

Exponential Standards and Regulations

Standard/Regulation	Topic	1 or 2 topics to list
1. <u>Exponential growth</u>	Exponential growth is a type of growth in which the rate of increase is proportional to the current value. It is often used to model population growth, compound interest, and the spread of diseases.	Exponential growth is a type of growth in which the rate of increase is proportional to the current value. It is often used to model population growth, compound interest, and the spread of diseases.
2. <u>Exponential decay</u>	Exponential decay is a type of decay in which the rate of decrease is proportional to the current value. It is often used to model radioactive decay, the cooling of an object, and the depletion of a resource.	Exponential decay is a type of decay in which the rate of decrease is proportional to the current value. It is often used to model radioactive decay, the cooling of an object, and the depletion of a resource.
3. <u>Exponential functions</u>	Exponential functions are functions of the form $y = a \cdot b^x$, where a and b are constants and x is the independent variable. They are used to model a wide variety of phenomena, including growth and decay.	Exponential functions are functions of the form $y = a \cdot b^x$, where a and b are constants and x is the independent variable. They are used to model a wide variety of phenomena, including growth and decay.
4. <u>Exponential regression</u>	Exponential regression is a statistical technique used to fit an exponential function to a set of data. It is often used to analyze data that shows exponential growth or decay.	Exponential regression is a statistical technique used to fit an exponential function to a set of data. It is often used to analyze data that shows exponential growth or decay.

With the information you have, you can now create a comprehensive report on the topics of Exponential Standards and Regulations.

Human Revised Statutes

Link	URL	Human Population, 2010
Link	U.S. Census Bureau	U.S. Census Bureau, 2010
Link	U.S. Census Bureau	U.S. Census Bureau, 2010
Link	U.S. Census Bureau	U.S. Census Bureau, 2010
Link	U.S. Census Bureau	U.S. Census Bureau, 2010

The image displays a grid of 24 pages from a German medical textbook, organized into 6 rows and 4 columns. Each page contains dense German text, often accompanied by diagrams, tables, and numbered lists. The pages are numbered 1 through 24 in the top right corner. The content covers various medical topics, including anatomy, physiology, and pathology. The text is written in a formal, academic style, typical of medical textbooks. The pages are arranged in a grid, with each page containing a unique set of information. The overall layout is clean and professional, with clear headings and subheadings. The text is in German, and the pages are numbered 1 through 24. The content is dense and detailed, providing a comprehensive overview of the topics covered. The pages are arranged in a grid, with each page containing a unique set of information. The overall layout is clean and professional, with clear headings and subheadings. The text is in German, and the pages are numbered 1 through 24. The content is dense and detailed, providing a comprehensive overview of the topics covered.

President

Topics

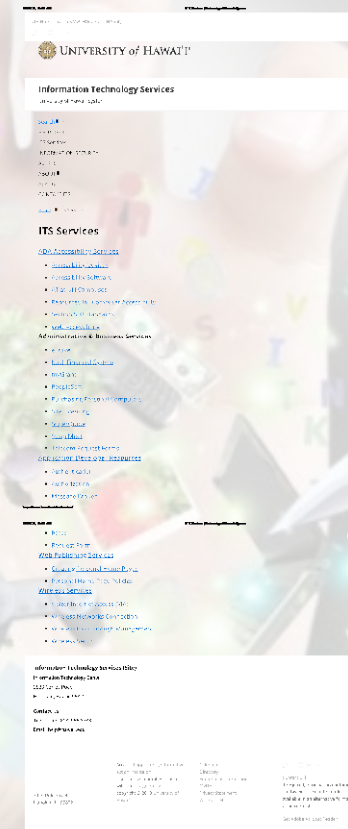
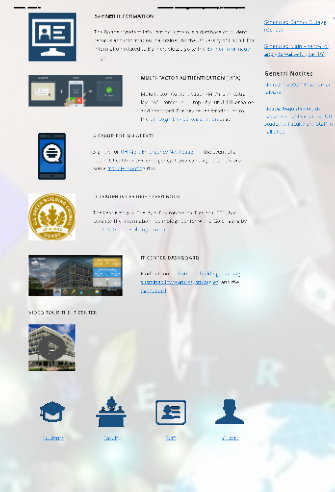
No Topics found



HACC 2023 Challenge – AI Use Cases

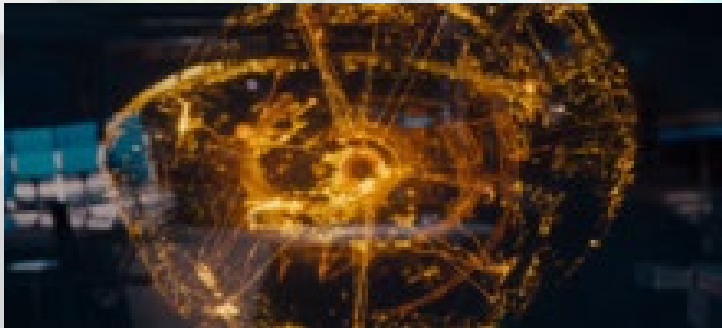
- ITS Help Desk – *Ask Us* Knowledgebase
- Bonus Case #1: ITS InfoSec Policies and Guidelines
- Bonus Case #2: ITS Service Catalog

HACC 2023 Challenge – AI Use Cases: ITS Service Catalog



HACC 2023 Challenge – AI Use Cases

- ITS Help Desk – *Ask Us* Knowledgebase
- ITS InfoSec Policies and Guidelines
- ITS Service Catalog



A banner at the top of the slide features a blue background with light streaks. It includes the word 'Ko'olalo' in large white letters, a small cartoon character, and a list of names: 'ka', 'A', 'Haka', 'Nā Leo', 'Nālani', 'Manu', 'Ne', and 'a'. On the right, there are two large, stylized red and white sails.

Thank you for considering our challenge!

HACC2023 Slack *c-uh-askus*

Hawai'i's University for Today and Tomorrow



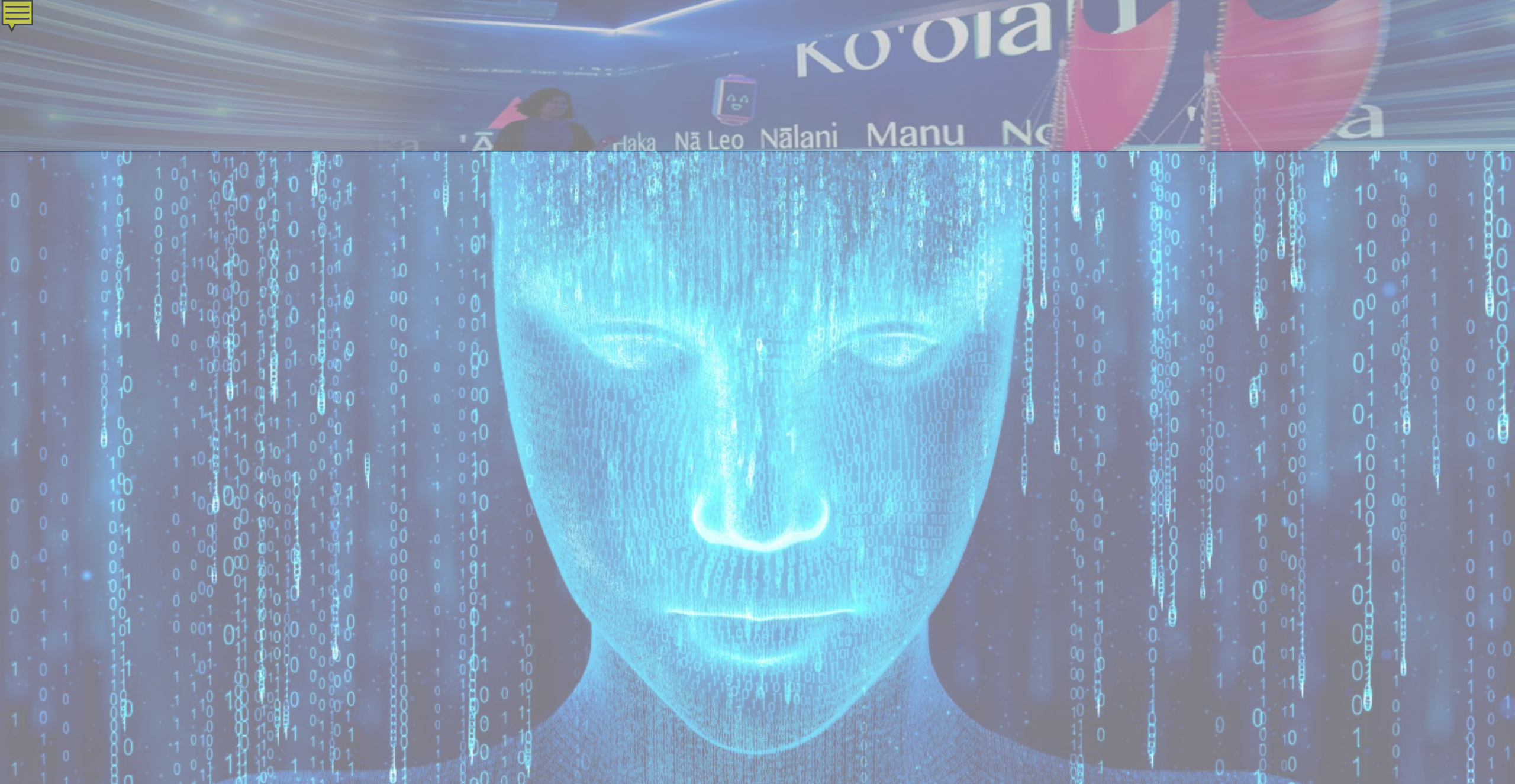
Our Aspirations

The University of Hawai'i (UH) offers opportunity and hope for every resident of Hawai'i. As the sole provider of higher public education in the state, the UH can drive a more vibrant, sustainable, resilient, just and kind future across our islands. And our scholarship must address the opportunities and challenges of Hawai'i, the Pacific and our planet.

We want the university to be grounded in traditional Hawaiian values, in aloha, to create a strong sense of place, while also serving as a forward-looking economic engine driving hubs of innovation and research.

As the UH begins its 116th year of service, we must remain vigilant, anticipate what is coming and act with agility and compassion to maintain a vital role in shaping the future of our island home. It must be **Hawai'i's university for today and tomorrow.**







Ko'olau

